



Pêches et Océans
Canada

Fisheries and Oceans
Canada



PUBLIC CONSULTATION FISHING VESSEL SAFETY

Canadian Hydrographic Service Marine Charts Bathymetric Data



Grande-Rivière February 2009

Canada



Pêches et Océans
Canada

Fisheries and Oceans
Canada



Introduction

- **Production Plan 2008/2009/2010**
- **Hydrographic Surveys 2009**
- **Electronic Charts**
- **New Web Site**
- **Bathymetric Data**

Canada



PRODUCTION 2008/09

Chart Number	Sector	Published
1223	Chenal du Bic and approches	3 June 2008
1310	Port of Montréal	21 April 2008
1311	Sorel to Varennes	2 May 2008
1314	Donnacona to Batisccan	18 April 2008
1315	Québec to Donnacona	February 2009
1317	Sault-au-Cochon to Québec	5 Sept. 2008
1351	Bassin de Chambly to Lake Champlain	9 Jan 2009
1510	Lac des Deux Montagnes	20 Febr 2009
4428	Havre de Natashquan	2 May 2008
4452	Harbours and Anchorages / Côte-Nord du Golfe du Saint-Laurent	February 2009

Canada



PRODUCTION PLAN 2009-2010

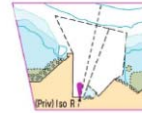
New Editions		
1203	Tadoussac to Cap Éternité	
1226	Harbours and Anchorages / St. Lawrence River North Shore	
1230	Plans Péninsule de la Gaspésie	
1510	Lac des Deux-Montagnes	
4416	Gaspé Harbour	
4430	Plans – île d'Anticosti	
New Charts		
NC 1429	South Shore Canal	Summer 09
NC 1430	Lac Saint-Louis	Summer 09

Canada



PRODUCTION OF PATCHES 2009/10

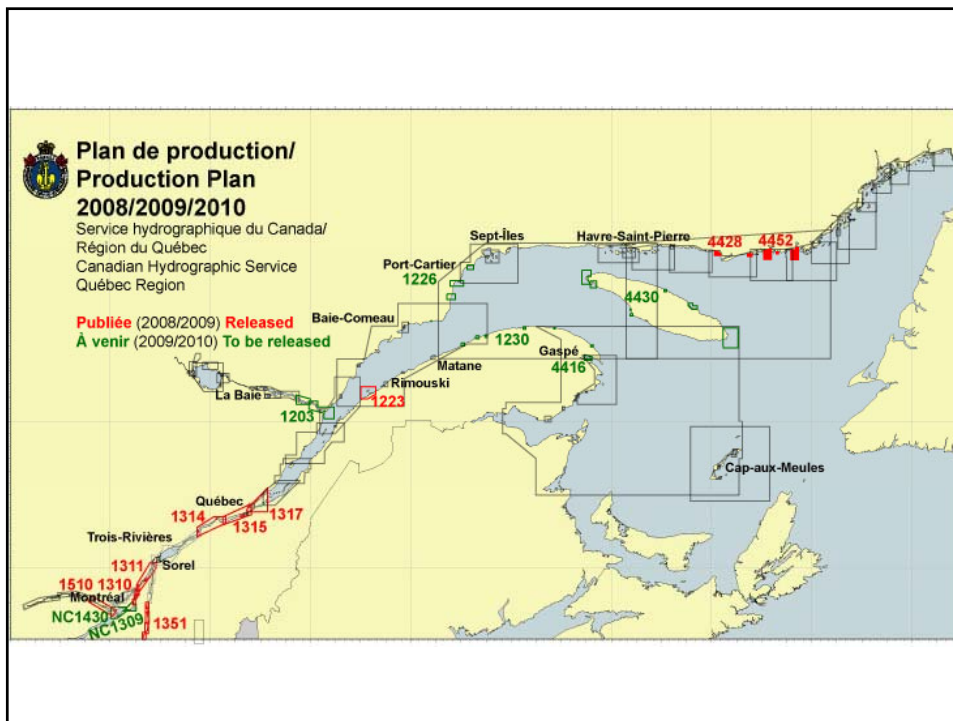
Patches		
1209	Quai Maltais	In production
1220	Pointe-Noire	6 February 2009
1226	Public wharf	In production
1311	Sorel-Tracy	In production
1312	Sorel-Tracy	In production
1350	Sorel-Tracy	In production



POUR CARTE/FOR CHART 1220

www.notmar.ca

Canada



Pêches et Océans Canada / Fisheries and Oceans Canada



Are your chart up to date ???

1. Check for the current edition www.charts.gc.ca
2. Free subscription to notmar.gc.ca



Striking a shoal or being disoriented by the change of a buoy is not a pleasant experience. Reduce the risk of having this kind of incident by updating your nautical charts.

www.charts.gc.ca



Recherche dans notmar

1230 ou choisissez carte

de: Sep 2006 à: Dec 2006

Inclure les avis aux navigateurs antérieurs à l'an 2000 (janvier 1997 à décembre 1999)

Chercher les cartes >>



PÊCHES ET OcéANS CANADA / Service hydrographique du Canada

Recherche de cartes-papiers courantes du SHC

Produits: Cartes et publications maritimes, Publications, Produits associés, Avis aux navigateurs, Coordonnées

Rechercher par: Saisissez % ou * comme caractère générique

Carte: Toutes


ou choisissez: Choisissez une carte

ou région de SHC: Toutes les régions

Chaque: Recherche | Effectuer




Pêches et Océans Canada / Fisheries and Oceans Canada




SURVEYS 2009

- **St. Lawrence Ship Channel (Montréal to Chenal du Nord)**
- **Training Survey Chart 1235 Cap-à-l'Aigle Region**
- **Ports of Gaspésie according to Public Works and Governmental Services Canada**
- **Arial Photos Survey North Shore or Gaspésie (Sailing Directions ATL 110 Cap Whittle/Cap Gaspé/Les Escoumins)**
- **Multibeam Survey Strait of Honguedo (NRCan)**
- **Multibeam Survey Trois-Pistoles Region and from Pointe des Monts to Sept-Îles**
- **Investigation Survey Chart 1233 (Cap aux Oies to Sault-au-Cochon)**




Pêches et Océans Canada Fisheries and Oceans Canada



CHS Digital Charts

- ▶ Available from January 2009
- ▶ Available in 2 formats:
 - Raster BSB v4.0
 - Vector S-57
- ▶ **NEW** Online updating service
- ▶ **IMPORTANT** Registration of CDs

www.charts.gc.ca



Canada

Pêches et Océans Canada Fisheries and Oceans Canada



CHS Digital Charts Raster CDs

Pour que ça clique avec la réalité !
To match reality !

Cartes marines électroniques
du Service hydrographique du Canada

Canadian Hydrographic Service
Digital Charts



Disponible sur le Système maritime
available from our
maritime system

www.charts.gc.ca
www.charts.gc.ca

Some Raster CDs

- CEN01: Montreal to Quebec - Richelieu River \$49.95
- ATL01: Newfoundland East and South \$174.95
- ATL02: Gulf of St. Lawrence South \$174.95
- ATL03: Quebec to Anticosti Island West \$74.95
- ATL04: Labrador Coast \$74.95
- ATL05: Gulf of St. Lawrence North - Newfoundland West \$124.95
- ATL06: Nova Scotia South - Bay of Fundy \$174.95
- NOR01: Northern Canada \$99.95

Canada

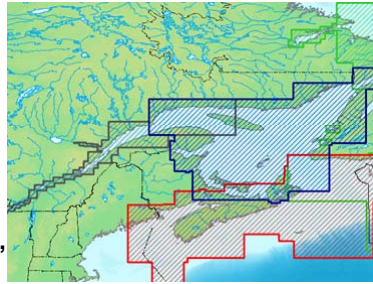


CHS Digital Charts

Vector CDs

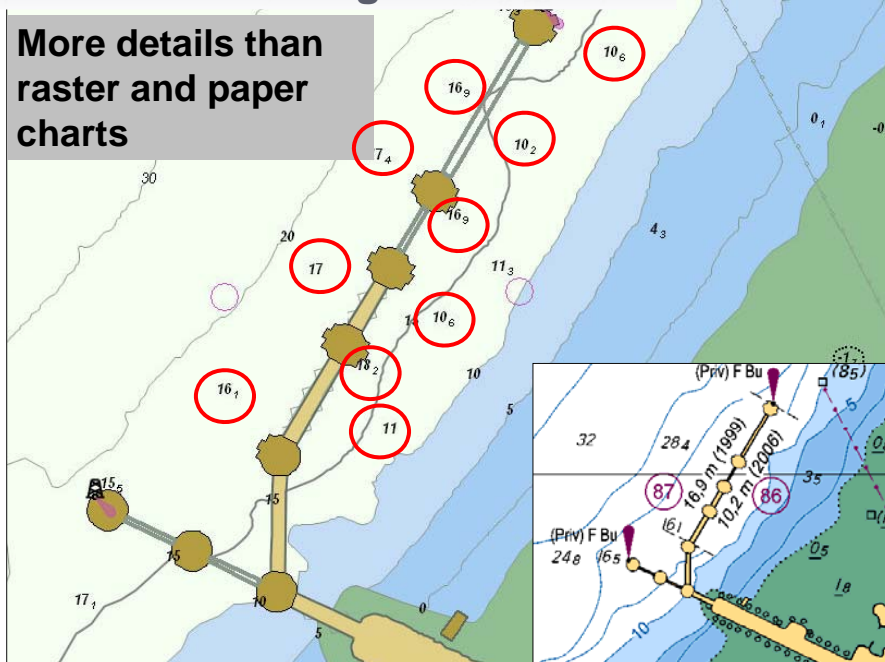
599.95 \$ ea.

- PAC-A: Vancouver Island East
- PAC-B: Vancouver Island West – Queen Charlotte Island
- CEN-A: Great Lakes - Superior and Huron
- CEN-B: Great Lakes - Erie and Ontario
- CEN-C: St. Lawrence River
- ATL-A: Gulf of St. Lawrence
- ATL-B: Nova Scotia - Baie of Fundy
- ATL-C: Newfoundland East and South Coast, Labrador Coast and Arctic



S-57 Electronic Navigational Charts

More details than raster and paper charts



Pêches et Océans Canada Fisheries and Oceans Canada

New Website:
www.charts.gc.ca

Online this Spring

- Easier to navigate
- Digital Charts Registration
- New Search Tool for Charts

Canada

Pêches et Océans Canada Fisheries and Oceans Canada

New Online Catalogue

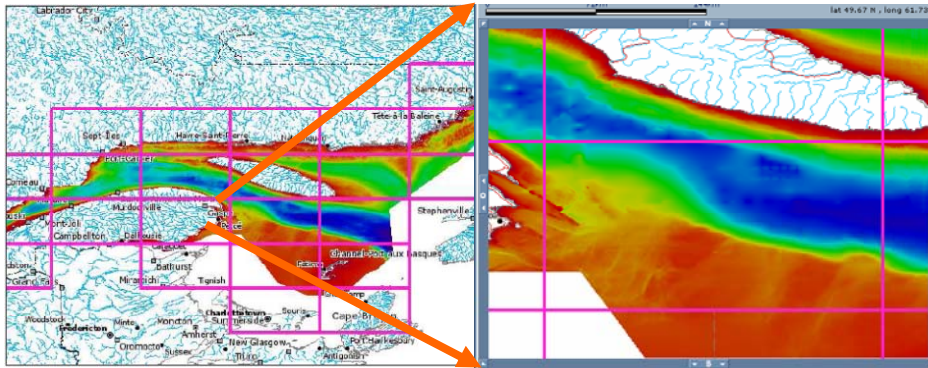
www.charts.gc.ca
Spring 2009

Canada



GRIDDÉS BATHYMETRIC DATA 500 m RESOLUTION

<http://public.geoportal-geoportail.gc.ca/bathyDataBrowser/>



Canada



QUESTIONS?

For more
information:
www.charts.gc.ca
chsinfo@dfo-mpo.gc.ca

Téléphone:
418 775-0502



Canada