



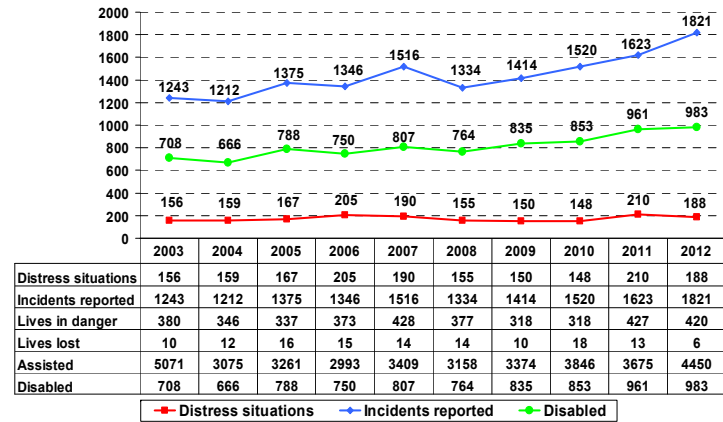
Sécurité d'abord, Service constant



Standing Committee on Fishing Vessel Safety

February 14, 2013

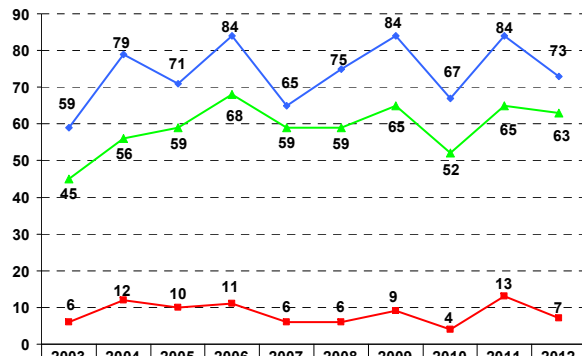
Trends – Past 10 years



Distress situations	156	159	167	205	190	155	150	148	210	188
Incidents reported	1243	1212	1375	1346	1516	1334	1414	1520	1623	1821
Lives in danger	380	346	337	373	428	377	318	318	427	420
Lives lost	10	12	16	15	14	14	10	18	13	6
Assisted	5071	3075	3261	2993	3409	3158	3374	3846	3675	4450
Disabled	708	666	788	750	807	764	835	853	961	983

—■— Distress situations
 —◆— Incidents reported
 —●— Disabled

Trends – Past 10 years Fishing vessels



	2003	2004	2005	2006	2007	2008	2009	2010	2011	2012
Incidents reported	59	79	71	84	65	75	84	67	84	73
Distress situations	6	12	10	11	6	6	9	4	13	7
Disabled	45	56	59	68	59	59	65	52	65	63
Lives saved	18	43	37	27	16	24	24	8	32	18
Lives lost	2	0	0	0	0	0	2	0	1	0

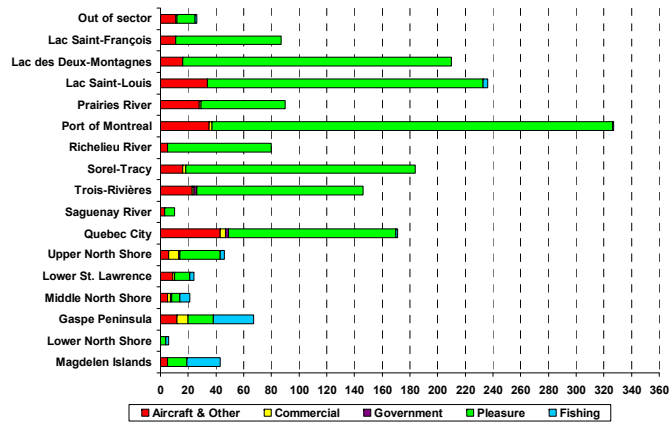
3

Marine & air resources



4

Total crafts assisted by source – 2012



5

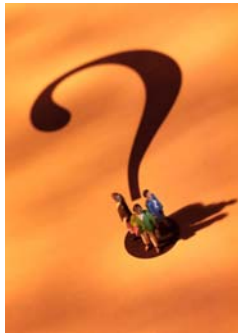
EPIRB

Since February 1, 2009, the system only processes 406 MHz signals and no longer hears 121.5/243.0 MHz emergency beacons. 406 MHz emergency beacons offer many benefits over 121.5/243.0 MHz.



6

QUESTION



7

For more info, visit the web site of the Canadian Coast Guard, Central & Arctic region:

□ www.marinfo.gc.ca

8