

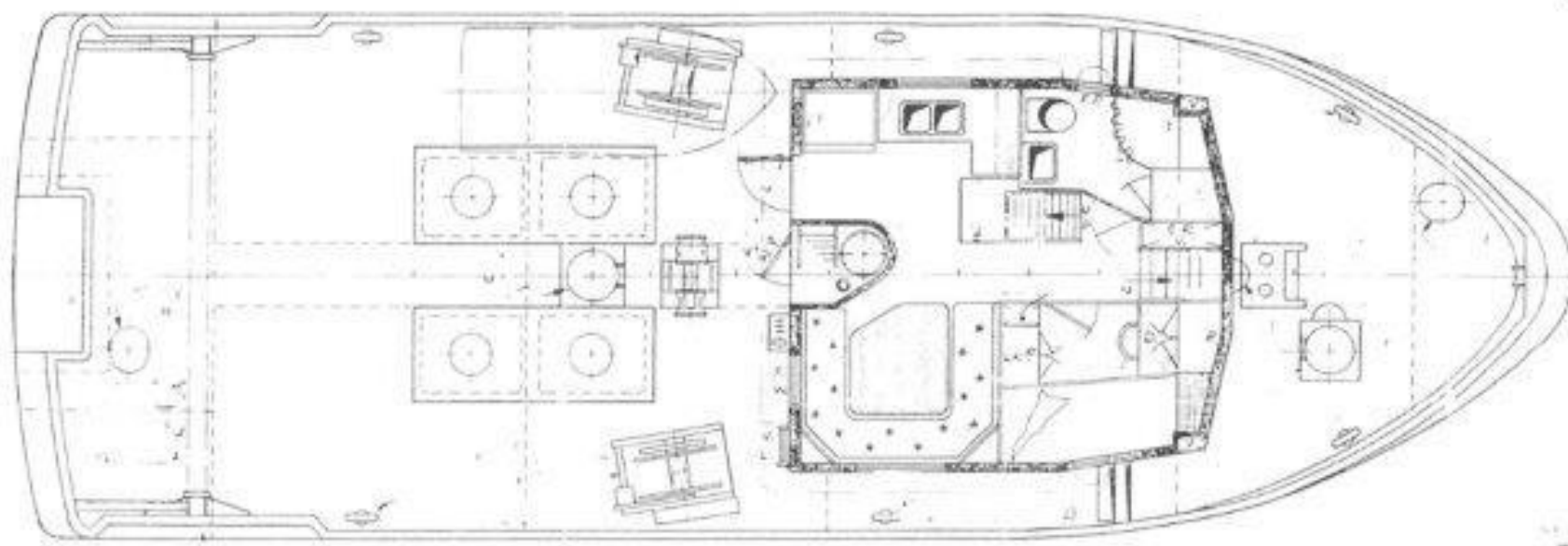
GROUNDING OF THE FISHING VESSEL JONEVE

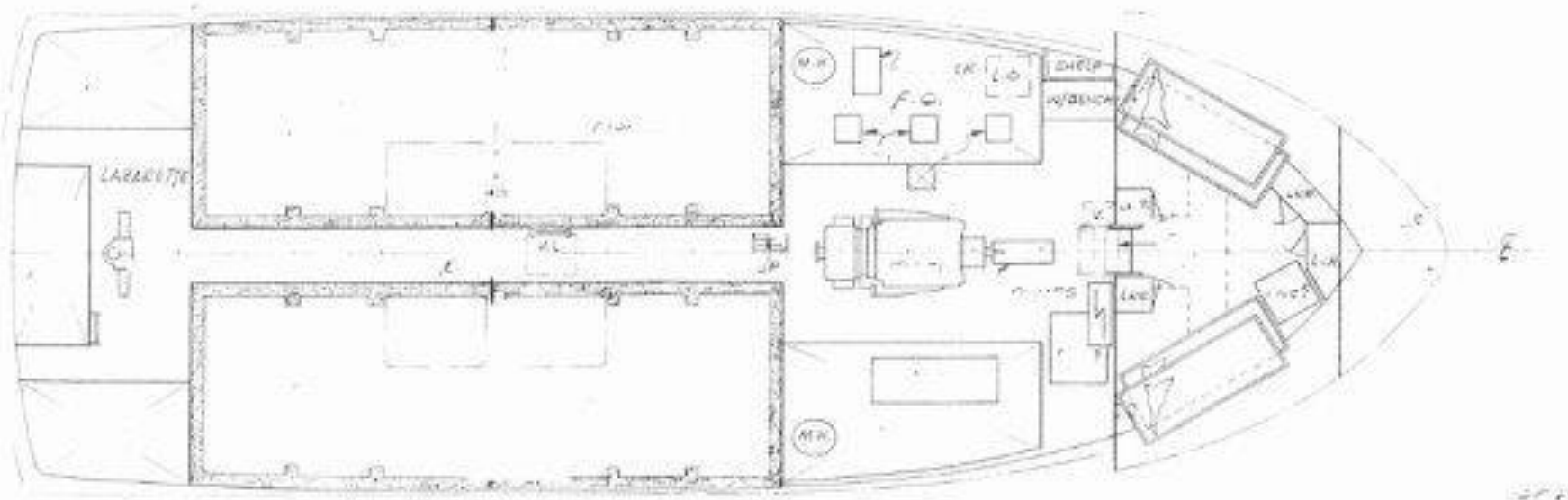
**Transport Canada, Marine Safety and Security
(TCMSS)**

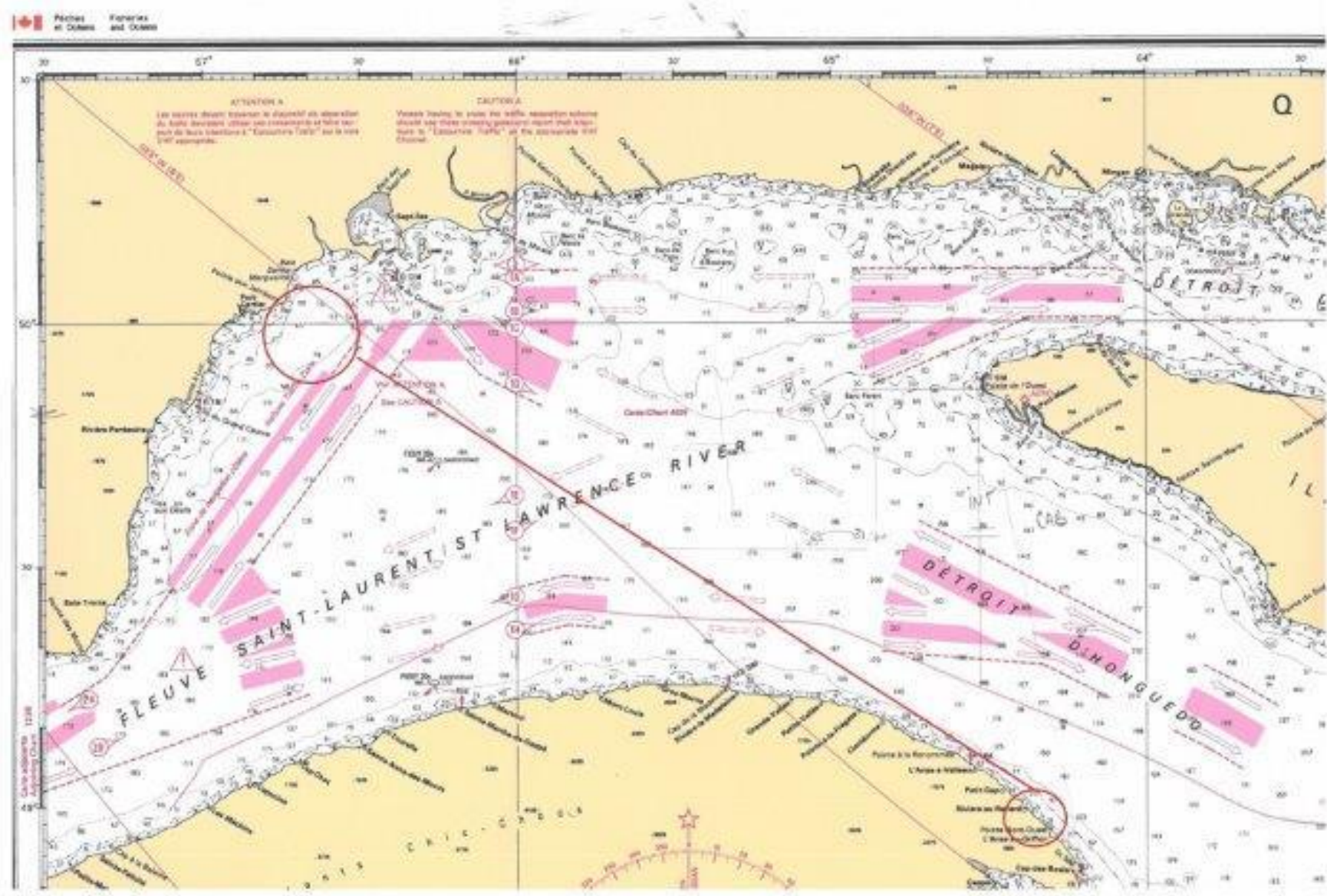
RDIMS #14895407











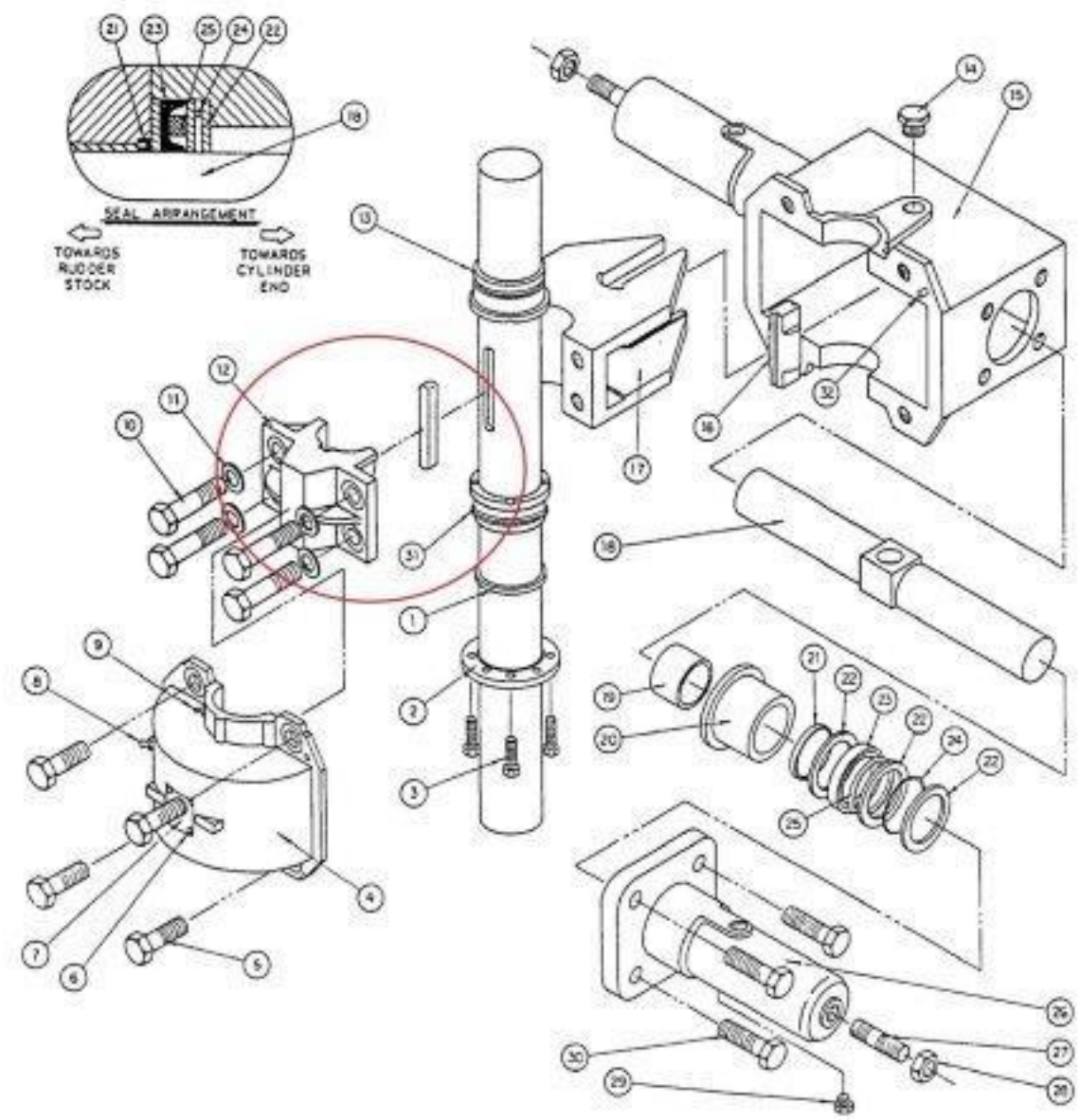










Photo : Joëlle-Anne Côté



Photo : Joëlle-Anne Côté



Photo : Joëlle-Anne Côté





Photo : Radio-Canada





REGULATORY REQUIREMENTS

Fishing Vessel Safety Regulations

Steering Gear

Where a manually operated hydraulic steering system is the auxiliary system to a powered hydraulic steering system, the change-over mechanism shall be located in the wheelhouse.



REGULATORY REQUIREMENTS

Fishing Vessel Safety Regulations

Safety Procedures

- Safety procedures shall be established

Drills on procedures

- Drills on the safety procedures shall be held to ensure that the crew is at all times proficient in carrying out those procedures.



REGULATORY REQUIREMENTS

Marine Machinery Regulations

SCHEDULE VII Steering Systems, Shiplside Components and Windlasses

Steering Systems

- Installation shall consist of totally independent main and auxiliary steering gears
- The auxiliary steering gear shall have the capacity to be brought safely and rapidly into action in case of emergency
- An auxiliary steering gear shall be power-operated where a rudder stock is over 230 mm



REGULATORY REQUIREMENTS

Ship Station (Radio) Regulations, 1999

Sources of Electrical Energy

- A ship that is 20 m or more in length shall have a reserve source of energy



REGULATORY REQUIREMENTS

Ships Electrical Standards

Emergency Electrical Power

- Every ship of Group 5B which has a ship's service electrical system of 50 volts or over, shall have an emergency electrical power source for the following services:
- For a period of three (3) hours
- The ship's radio station, if the vessel is equipped with an emergency generator.

ANALYSIS

- ☐ Decision on the port of shelter?
- ☐ Towing or emergency tiller bars?
- ☐ Weather considerations?
- ☐ Stronger towing line?
- ☐ Help?
- ☐ Surprised by icing?
- ☐ Surprised by the waves?
- ☐ Wait for daylight?

AFTERTHOUGHT

- ✓ Procedures and drills for emergency tiller
- ✓ Towing procedures
- ✓ Emergency lighting: 6V flashlights used only in case of emergency
- ✓ Radio emergency battery
- ✓ Steering gear check

QUESTIONS???

THANK YOU

Simon Pelletier
Transport Canada
Marine Safety and Security
Simon.pelletier@tc.gc.ca