



Pêches et Océans
Canada

Fisheries and Oceans
Canada



PUBLIC CONSULTATION FISHING VESSEL SAFETY

Canadian Hydrographic Service Products at your Service!



RIMOUSKI February 2008

Canada



Pêches et Océans
Canada

Fisheries and Oceans
Canada



Introduction

- **Production Plan 2007/2008/2009**
- **Hydrographic Surveys 2007-2008**
- **Electronic Charts**
- **CHS Levels of Service**
- **Bathymetric Data**

Canada



PRODUCTION 2007

Chart No	Sector	Published
1312	Lac Saint-Pierre	June 2007
1313	Batiscan au/to Lac Saint-Pierre	Feb 2007
ATL 111	Sailing Directions, Fleuve Saint-Laurent, Île Verte to Québec and Fjord du Saguenay	June 07
ATL 100	Sailing Directions, General Information – Atlantic Coast	Feb 08

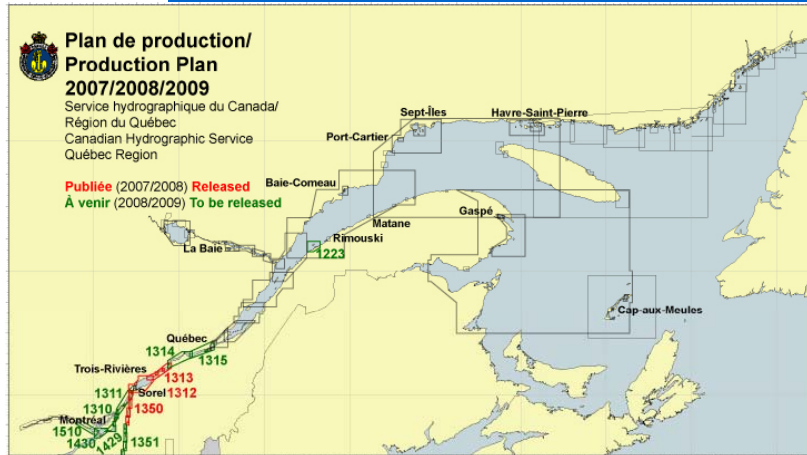


PRODUCTION 2007-2008

New Editions		
1223	Chenal du Bic and approaches	Apr 08
1310	Port de Montréal	Apr 08
1311	Sorel à Varennes	Apr 08
1314	Donnacona to Batiscan	Apr 08
1351	Rivière Richelieu – Chambly to Lake Champlain	Apr 08
1315	Québec to Donnacona	Summer 08
1510	Lac des Deux Montagnes	Fall 08
New Charts		
NC 1429	Chenal de la rive sud	Summer 08
NC 1430	Lac Saint-Louis	Fall 08



PRODUCTION Plan 2007-2009

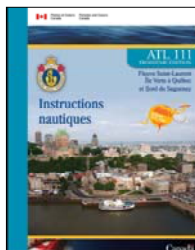


**Plan de production/
Production Plan
2007/2008/2009**
Service hydrographique du Canada/
Région du Québec
Canadian Hydrographic Service
Québec Region

Publiée (2007/2008) Released
À venir (2008/2009) To be released

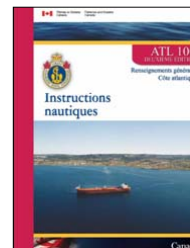


New Sailing Directions





- **ATL 111 St. Lawrence River, Île Verte to Québec and Fjord du Saguenay 9.95\$**

- **ATL 100 General Information – Atlantic Coast 14.95\$**






 Pêches et Océans Canada / Fisheries and Oceans Canada



Surveys 2008

- St. Lawrence Ship Channel (from Montréal to Île aux Coudres)
 - Ports of Montréal, Trois-Rivières, Québec and Saguenay
 - Aerial Photo Survey for lake Saint-Louis
 - Sailing Directions Revisory Survey from Québec to Montréal
 - Multibeam Survey for Détroit d'Honguedo
 - Multibeam Survey in Cacouna area and Mécatina trench (Gulf of St. Lawrence)

Canada

Pêches et Océans Canada Fisheries and Oceans Canada



CHS Digital Charts

- ▶ **Since March 30th 2007, CHS assumed responsibility**
- ▶ **Available in 2 formats:**
 - **Raster BSB**
 - **Vector S57**
- ▶ **Free Updating Service for One Year Upon Registration**
- ▶ **New Dealers**
- ▶ **Competitive Price**

www.charts.gc.ca



CEN01

Montreal to Quebec —
Richelieu River
Montréal à Québec —
Rivière Richelieu

1310, 1311, 1312, 1313, 1314,
1315, 1316, 1317, 1350, 1351,
1408, 1410, 1431, 1500, 1510



Canada

Pêches et Océans Canada Fisheries and Oceans Canada



CHS Digital Charts

Hooked on Precise Navigation!

Official digital charts
Canadian Hydrographic Service

Three formats to
• Raster BSB
• Vector S-57
• CD-ROM

For more information
• Access to updates
• New charts and new editions
for the geographic area
• Free technical support at any time

Available from a web site
to be determined

For more information visit
www.charts.gc.ca
613-998-4931



Some Raster CDs

- CEN01: Montreal to Quebec - Richelieu River \$49.95
- ATL01: Newfoundland East and South \$174.95
- ATL02: Gulf of St. Lawrence South \$174.95
- ATL03: Quebec to Anticosti Island West \$74.95
- ATL04: Labrador Coast \$74.95
- ATL05: Gulf of St. Lawrence North - Newfoundland West \$124.95
- ATL06: Nova Scotia South - Bay of Fundy \$174.95
- NOR01: Northern Canada \$99.95

Canada

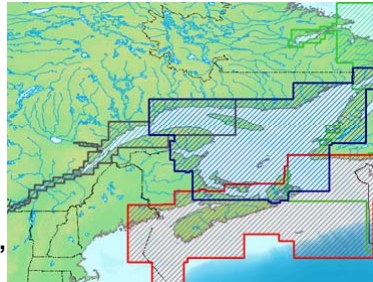


CHS Digital Charts

Vector CDs

599.95 \$ ea.

- PAC-A: Vancouver Island East
- PAC-B: Vancouver Island West – Queen Charlotte Island
- CEN-A: Great Lakes - Superior and Huron
- CEN-B: Great Lakes - Erie and Ontario
- CEN-C: St. Lawrence River
- ATL-A: Gulf of St. Lawrence
- ATL-B: Nova Scotia - Baie of Fundy
- ATL-C: Newfoundland East and South Coast, Labrador Coast and Arctic

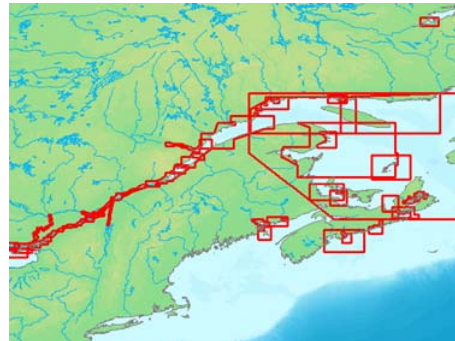


Canada



CHS Levels of Service

- ▶ Advisory Panel with representatives from shipping industry, boating, CCG, Transport Canada and Navy
- ▶ Risk Areas implemented : May 2004
- ▶ Consultation on LOS: October 2004
- ▶ Publication of LOS: October 2006
- ▶ Results of LOS: May 2007



Canada



CHS LOS Results 2006-07

Results are presented by topic:

- Charting
- Updating
- T&WL
- Publications
- Distribution



CHS LOS Results 2006-07: Charting

**Most Levels of Service related to charting were reached.
The LOS in regard to synchronization between NE of
paper charts and ENC's was not met. Several factors
explain this situation.**

- Charts (paper, ENC, raster) in the high risk category are reviewed a minimum once every five years (42 charts/year) and new editions issued when necessary.
- The cycle is every ten years for medium risk charts (25 charts/year).
- Low risk charts are normally subject to Notices to Mariners updating only.
- The underlying risk model is reviewed annually.
- Release of New Editions (ENCs and paper charts) is synchronized within three months of each other.
National average 4.1 months.
- Chart 1 booklet is always available. Web version in PDF and HTML formats are accessible 95% of the time.
Result : 99.8% (April to December 2006)



CHS LOS Results 2006-07: Updating

Most of the LOS related to the issue of critical information were reached.

The synchronization between NtM and Update messages (ENCs) was not met as the backlog against some ENCs still affected the national average results. All ENCs in high risk areas are updated on time.

- Notices to Mariners are issued within four months of CHS receiving source information.
National average 3.9 months
- Patches are available on the NOTMAR web site within five months once production commences.
National average 3.9 months.
- Color Patches are delivered via the Web.
- ENC update messages and Notices to Mariners are synchronized within one month.
National average 2.1 months.

Canada



CHS LOS Results 2006-07: T&WL

All LOS regarding T&WL were reached with the exception of the Tele-announcing service for the Great Lakes where 12 stations out of the 34 exceeded the restoration delay. Causes attributed to cold weather/low water level, delay by the telephone company and access to a remote areas. Solutions are under investigation for next season.

- Requests for general tidal information are addressed within 30 days 95% of the time. Result: 97.7%
- The national Tides, Currents and Water Levels web site is accessible 95% of the time. Result: 99.9%
- The phone service for Water Levels Observations for the St. Lawrence and Canadian tidal information (1-877 775-0790) is accessible 95% of the time. Result: 98%
- Tele-announcing service for the Great Lakes real-time water level information will be re-instated within 2 business days of reporting a problem 95% of the time. Result: Reached for 22 of the 34 stations.

Canada



CHS LOS Results 2006-07: Publications

We were successful in reaching all the LOS for our publications. *Sailing Directions* POD Project is underway. *Sailing Directions* booklets are presently being digitized and should be available as planned.

- Sailing Directions are always available. All new *Sailing Directions* editions will be digitized and available for print on demand delivery for 2008-09. *Project underway*. PAC 200 released within the new format.
- Canadian Tide and Current Tables are printed yearly, on or before November 30th. Tides Tables in PDF format are accessible on the web site 95% of the time. **Result : 98.2%** (April to December 2006)
- The four Catalogues of Nautical Charts and Publications are updated and published every two years.
- Interactive Paper Chart Catalogue and printable Paper Chart Catalogues in PDF format are accessible via CHS website 95% of the time. **Result : 96.7%** (April to December 2006)



CHS LOS Results 2006-07: Distribution

Even with the consolidation of distribution activities in Ottawa, the LOS Distribution target was reached.

- Orders are shipped to Authorized CHS Chart Dealers within five business days of receipt of the order 95% of the time. **Result : 97%**





Conclusion

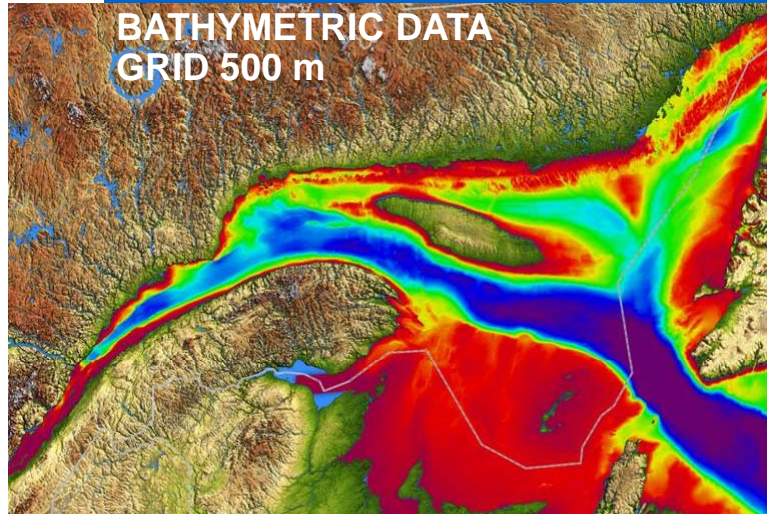
Overall, CHS has delivered the levels of service in accordance with the LOS published last Fall (2006).

However, we know improvements in performance can be made in some areas.

Efforts will be made to improve the synchronization between paper and electronic charts and also for synchronization of Notices to Mariners with Update messages.



BATHYMETRIC DATA GRID 500 m





Pêches et Océans
Canada

Fisheries and Oceans
Canada



QUESTIONS?

**For More
Information:
www.charts.gc.ca**

**Telephone:
418 775-0502**



Canada