

MPR Amendments

UPDATE ON FISHING VESSELS CERTIFICATES OF COMPETENCY

QPCFVS
February 13, 2015 – Rimouski



Warning



This presentation is intended to summarize and clarify certain legislative and regulatory requirements concerning the certification of fishing vessel personnel.

The goal of this presentation is not to cover all aspects of the regulations and this presentation should not be considered as a standard or a recommendation.

In case of conflict between this presentation and any legislative or regulatory document, the text of laws and regulations shall prevail.

International Convention on **S**tandards of **T**raining, **C**ertification and **W**atchkeeping for **F**ishing Vessel Personnel, 1995

- Canada has ratified the STCW-F Convention in June 2010
- The STCW-F Convention came into force on September 29, 2012
- Canada must have regulations in place to give full and complete effect to the convention by September 29, 2017



Government of Canada / Gouvernement du Canada

Canada³

VOYAGE CLASSIFICATION

Voyages under the STCW-F Convention:

- **Limited waters**
or
- **Unlimited waters**
(Any waters beyond “Limited waters”)



Government of Canada / Gouvernement du Canada

Canada⁴

LIMITED WATERS

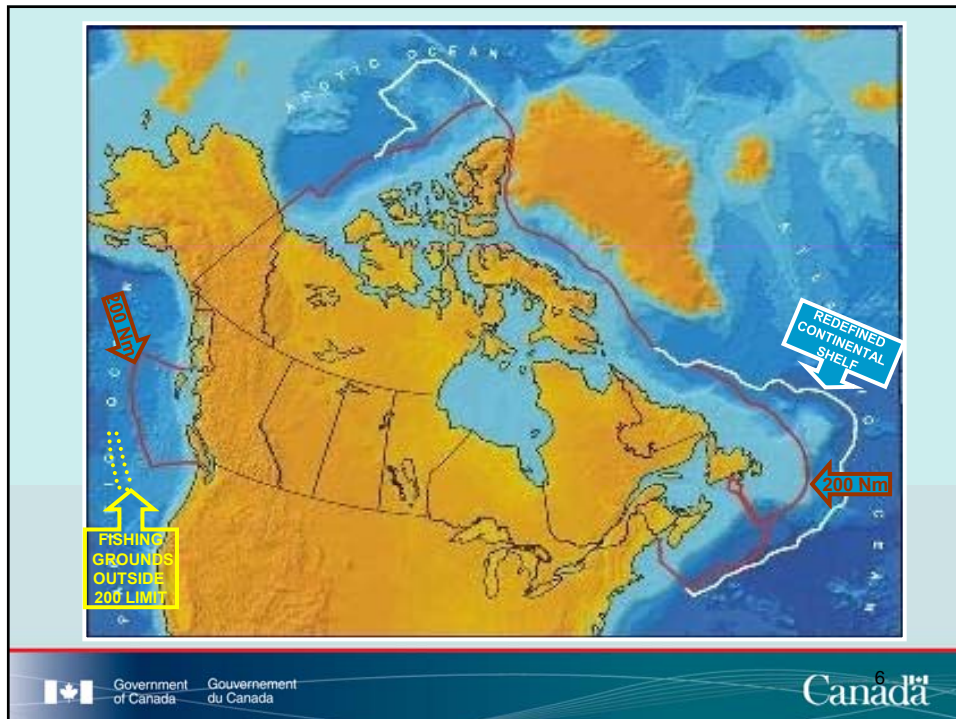
Definition of **Limited waters**:

“**Limited waters**” means waters within 200 nautical miles from shore or above the continental shelf, limited to the waters contiguous to Canada, United States (except Hawaii) and St-Pierre and Miquelon including on the west coast of Canada the waters up to Cobb-Eickelberg seamount chain at not more than 260 nautical miles from shore. (*eaux limitées*)



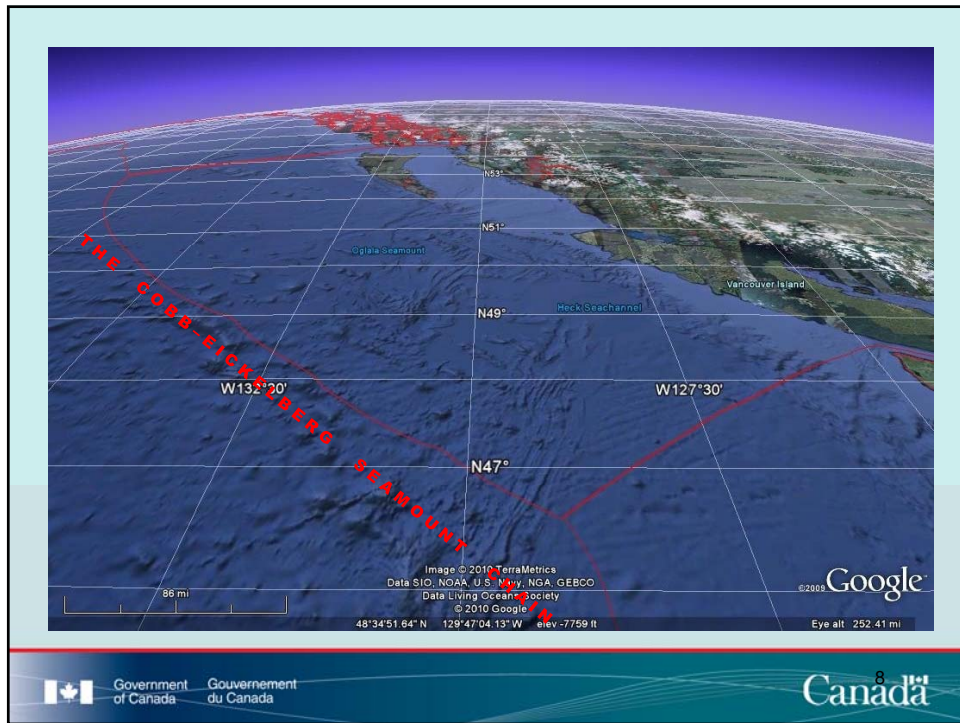
Government of Canada
Gouvernement du Canada

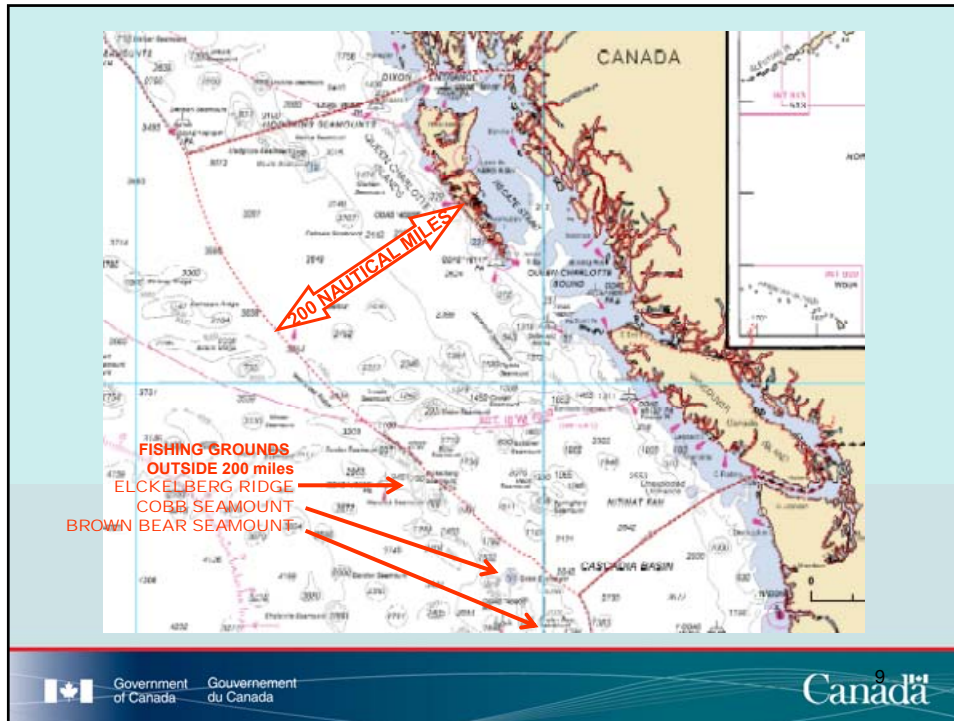
Canada 50th



Government of Canada
Gouvernement du Canada

Canada 6th





APPLICATION

STCW-F certification requirements

- Masters and officers in charge of a navigational watch on fishing vessels of **24 metres registered length** and over
- Engineers and second engineers of fishing vessels of **750 kW** propulsion power or more (regardless of the length)

Tonnage versus Length

- In an effort to harmonize the various regulatory cut-offs, it was decided that for vessels of **500 GT** and over, the size would be expressed in **gross tonnage** and for vessels below that size, **length** would be used
- The MPR team has been asked to comply with this requirement as much as possible



Government of Canada / Gouvernement du Canada

Canada

Fishing vessels length / tonnage statistics

Fishing vessels (FV) in Canada (28-10-2014):

FV > 24m = 160

FV > 24m and < 100 GT = 7 (all on West coast)

FV > 24m and between 100 and 150 GT = 30

FV > 24m and > 150 GT = 123

FV < 24m and > 100 GT = 226

FV < 24m and > 150 GT = 19

FV < 24 m and between 100 and 150 GT = 207

FV > 100 GT = 379 (any length)

FV > 150 GT = 142 (any length)

FV > 45m = 20 (19 on East Coast and 1 on West Coast)



Government of Canada / Gouvernement du Canada

Canada

Commercial vessels length / tonnage statistics

Commercial vessels in Canada (24-11-2014):

Commercial vessels < 60 GT = Approximately 29000

Commercial vessels < 60 GT and > 18m = 258

Fishing vessels = 64	}	162 vessels
Barges = 76		
Tugs = 22		

Commercial vessels < 60 GT on which holders of fishing certificates could not go if 18m is retained as equivalent to 60 GT = 96



Government of Canada / Gouvernement du Canada

Canada 13

Current proposed MPR amendments (agreed at previous CMAC)

Fishing Master, Unlimited Waters **	Fishing Master, Limited waters **	Fishing Master 45m, Limited waters **	Officer, Fishing, Unlimited waters Also valid as master of a fishing vessel of less than 24 meters in Limited waters. **	Officer, Fishing, 45m, Limited waters Also valid as master of a fishing vessel of less than 24 meters in Limited waters. **	FM 4, Limited waters Valid as: • Master, Fishing vessel of up to 100G, Limited waters, Canada only • Officer, Fishing vessel of less than 45 metres, Limited waters, Canada only **	Watchkeeping mate, Fishing, 24m, Limited waters Also valid as master of a fishing vessel of less than 12 metres, Limited waters. ***	SMY100	COO10/20H	STO certificate	STDP training certificate	POOC	Dec. of 7 fishing seasons as master
36 months	36 months	36 months	24 months	24 months	12 months	6 months						
Basic STCW	Basic STCW	Basic STCW	Basic STCW	Basic STCW	MED-DVS	MED-DVS						
Survival crafts	Survival crafts											
Advanced fire fighting	Advanced fire fighting											
ROC-MC	ROC-MC	ROC-MC	ROC-MC	ROC-MC	ROC-MC	ROC-MC						
SEN-LMS	SEN-F	SEN-F	SEN-F	SEN-F	SEN-Limited	SEN-Limited						
MAFA	MAFA	MAFA	MAFA	MAFA	MAFA	MBFA						
COM 1	COM 1											
COM 2												
ASTRO 1			ASTRO 1									
NS 2	NS 1	NS 1	NS 1	NS 1	NS 1							
MET 2*	MET 1	MET 1	MET 1									
SCS 2	SCS 2	SCS 2	SCS 1	SCS 1	SCS 1							
SM 1	SM 1											
GSK 2	GSK 1	GSK 1										
C & P 2	C & P 2	C & P 2	C & P 2	C & P 1	C & P 1							
ORAL	ORAL	ORAL	ORAL	ORAL	ORAL	ORAL						Chartwork & Nav. safety ORAL & STAB

*MET 2 and MET 1 exams will be amalgamated
 **Also valid as Master, "commercial vessel" of less than 60 gross tonnage, Near coastal voyage Class 2
 *** Also valid as Master, "commercial vessel" of not more than 12 metres in length overall (except tugs), Near coastal voyage Class 2



Government of Canada / Gouvernement du Canada

Canada 14

New proposal (November 2014 CMAC)

- > Elimination of Fishing Master, 45m, Limited waters
- > Elimination of the 45m limit on the Officer, Fishing, 45m, Limited waters
- > Replacing the FM 4, Limited waters by the Fishing Master, 24m, Limited waters

Fishing Master, Unlimited Waters **	Fishing Master, Limited waters **		Fishing Officer, Unlimited waters Also valid as master of a fishing vessel of less than 24 meters in Limited waters. **	Fishing Officer, Limited waters Also valid as master of a fishing vessel of less than 24 meters in Limited waters. **	Fishing Master, 24m, Limited waters Valid as: • Master, Fishing vessel of less than 24m, Limited waters • Officer, Fishing vessel of less than 45 metres, Limited waters **	Watchkeeping mate, Fishing, 24m, Limited waters Also valid as master of a fishing vessel of less than 12 meters, Limited waters. ***	SHIPW	COOP/24M	SVOP certificate	STOP training	POC	Dir. of 7 fishing seasons
36 months	36 months		24 months	24 months	12 months	6 months						
Basic STCW	Basic STCW		Basic STCW	Basic STCW	MED-DVS	MED-DVS						
Survival crafts	Survival crafts											
Advanced fire fighting	Advanced fire fighting											
ROC-MC	ROC-MC		ROC-MC	ROC-MC	ROC-MC	ROC-MC						
SEN-LMS	SEN-F		SEN-F	SEN-F	SEN-Limited	SEN-Limited						
MAFA	MAFA		MAFA	MAFA	MAFA	MBasicFA						
COM 1	COM 1											
COM 2												
ASTRO 1			ASTRO 1									
NS 2	NS 1		NS 1	NS 1	NS 1							
MET 2*	MET 1		MET 1									
SCS 2	SCS 2		SCS 1	SCS 1	SCS 1							
SM 1	SM 1											
GSK 2	GSK 1											
C & P 2	C & P 2		C & P 2	C & P 1	C & P 1							
ORAL	ORAL		ORAL	ORAL	ORAL	ORAL & STAB						

*MET 2 and MET 1 exams will be amalgamated
 ** Also valid as Master, "commercial vessel" of less than 18 metres, Near coastal voyage Class 2
 *** Also valid as Master, "commercial vessel" of not more than 12 metres in length overall (except tugs), Near coastal voyage Class 2

Validity of other domestic (Non STCW-F) fishing certificates

Certificate	Sheltered waters	Near Coastal, Class 2	Limited waters	Unlimited waters
Certificate of service as master F/V < 60GT (SMFV60)	Master F/V < 60GT Limits specified on certificate Master ≤ 12m LOA *	Master F/V < 60GT Limits specified on certificate Master ≤ 12m LOA *	Master F/V < 60GT Limits specified on certificate	Master F/V < 60GT Limits specified on certificate
Certificate of service as OOW F/V < 24 m (CSOOW24M)	OOW F/V < 24 m Limits specified on certificate	OOW F/V < 24 m Limits specified on certificate	OOW F/V < 24 m Limits specified on certificate	OOW F/V < 24 m Limits specified on certificate
SVO certificate of competency with Fishing Module (New card)	Master F/V ≤ 12m	Master F/V ≤ 12m	Master F/V ≤ 12m valid for the areas specified in the Declaration of at Least 7 Fishing Seasons, that do not extend beyond 50 nautical miles from the coast of Canada if the holder had served in those waters before 1 July 2007	N/A
SVOP training certificate issued prior to MPR amendments	Master F/V ≤ 15GT or ≤ 12m Master ≤ 5GT **	Master F/V ≤ 15GT or ≤ 12m Master ≤ 5GT **	Master F/V ≤ 15GT or ≤ 12m valid for the areas specified in the Declaration of at Least 7 Fishing Seasons, that do not extend beyond 50 nautical miles from the coast of Canada if the holder had served in those waters before 1 July 2007	N/A
PCOC issued prior to MPR amendments **	Master F/V ≤ 15GT or ≤ 12m Master, vessels of up to 8.5 m LOA * carrying up to 6 passengers	Master F/V ≤ 15GT or ≤ 12m (Max 2 miles from shore) Master, non-passenger carrying vessels of up to 8.5 m LOA * (Max 2 miles from shore)	N/A	N/A
Declaration of at Least Seven Fishing Seasons acquired before 1 July 2007 as master of a fishing vessel of not more than 15 GT or 12 m	Master F/V ≤ 15GT or ≤ 12m	Master F/V ≤ 15GT or ≤ 12m	Master F/V ≤ 15GT or ≤ 12m, valid for the areas specified in the Declaration of at Least 7 Fishing Seasons, that do not extend beyond 50 nautical miles from the coast of Canada if the holder had served in those waters before 1 July 2007	N/A

* Except tugs ** The 15 GT limit will not apply for certificates issued after MPR amendments

**EXCHANGE / RENEWAL TABLE BASED ON:
GRANDFATHERING OLD CERTIFICATES AND REPLACEMENT OF 100 GT BY 24 METERS**

Column 1 Former Certificates	Column 2 Requirements for exchange or additional requirements for 1 st renewal	Column 3 Corresponding certificate for exchange	Column 4 Non-STCW-F limitations	Column 5 STCW-F limitations STCW Regulation
Fishing Master, First Class (CFV1) issued from March 21, 1980 and before July 1, 2007 Or Fishing Master, First Class (FM1) issued as from July 1, 2007 and before XXXX XX, XXXX	None	Fishing Master, Unlimited Waters	Master, any type of vessels of less than 60 GT, 18m , NC2	Skipper, Fishing Vessel, unlimited waters, STCW-F Reg. II/1



Government of Canada / Gouvernement du Canada

Canada 17th

**EXCHANGE / RENEWAL TABLE BASED ON:
GRANDFATHERING OLD CERTIFICATES AND REPLACEMENT OF 100 GT BY 24 METERS**

Column 1 Former Certificates	Column 2 Requirements for exchange or additional requirements for 1 st renewal	Column 3 Corresponding certificate for exchange	Column 4 Non-STCW-F limitations	Column 5 STCW-F limitations STCW Regulation
Fishing Master, Second Class (CFV2) issued from March 21, 1980 and before July 1, 2007	None (Renewal with same validity)	Fishing Master, Second Class (CFV2)	Master of a fishing vessel of any gross tonnage engaged on a voyage anywhere within the area around North America bounded by the meridians of longitude 30 degrees West and 180 degrees West and north of the parallel of latitude 6 degrees North and as Chief Mate of a fishing vessel of any gross tonnage engaged on an unlimited voyage Master, any type of vessels of less than 60 GT, 18m NC 2	STCW-F Reg. I/8.1
Fishing Master, Second Class (CFV2) issued from March 21, 1980 and before July 1, 2007 Or Fishing Master, Second Class (FM 2) issued as from July 1, 2007 and before XXXX XX, XXXX	None	Fishing Master, Limited Waters and Officer, Unlimited waters	Master, any type of vessels of less than 60 GT 18m , NC2	Skipper, Fishing Vessel, Limited waters, STCW-F Reg. II/3 Officer, Unlimited Waters, STCW-F Reg. II/2 and I/8.1



Government of Canada / Gouvernement du Canada

Canada 18th

**EXCHANGE / RENEWAL TABLE BASED ON:
GRANDFATHERING OLD CERTIFICATES AND REPLACEMENT OF 100 GT BY 24 METERS**

Column 1 Former Certificates	Column 2 Requirements for exchange or additional requirements for 1 st renewal	Column 3 Corresponding certificate for exchange	Column 4 Domestic limitations Non- STCW-F	Column 5 STCW-F Limitations
Fishing Master, Third Class (CFV3) issued from March 21, 1980 and before July 1, 2007 Or Fishing Master, Third Class (FM3) issued as from July 1, 2007 and before XXXX XX, XX	None	Fishing Master, Limited Waters and Officer, Unlimited waters	Master ,any type of vessels of less than 60 GT 18m , NC2	Skipper, Fishing Vessel, Limited waters, STCW-F Reg. II/3 Officer, Fishing Vessel, Unlimited Waters, STCW-F Reg. II/2 and I/8.1



Government of Canada / Gouvernement du Canada



**EXCHANGE / RENEWAL TABLE BASED ON:
GRANDFATHERING OLD CERTIFICATES AND REPLACEMENT OF 100 GT BY 24 METERS**

Column 1 Former Certificates	Column 2 Requirements for exchange or additional requirements for 1 st renewal	Column 3 Corresponding certificate for exchange	Column 4 Domestic limitations Non- STCW-F	Column 5 STCW-F Limitations
Fishing Master, Fourth Class (CFV 4) issued from March 21, 1980 and before July 1, 2007	None (Renewal with same validity)	Fishing Master, Fourth Class (CFV 4)	Master on board a fishing vessel of not more than 100 gross tonnage engaged anywhere in the coastal waters of North America that is within 200 miles of the shore or within the waters of the continental shelf, whichever distance is farther and as officer in charge of the watch of a fishing vessel of any gross tonnage engaged on an unlimited voyage Master ,any type of vessels of less than 60 GT 18m , NC2	Officer, Fishing vessel, Unlimited Waters STCW-F Reg. I/8.1
Fishing Master, Fourth Class (FM4) issued as from July 1, 2007 and before XXXX XX, XXXX	None (Renewal with same validity)	Fishing Master, Fourth Class (FM4)	Master, Fishing vessel of up to 100 gross tonnage, Limited waters Officer, Fishing vessel, Limited Waters Master, any type of vessels of less than 60 GT 18m , NC2	Officer , Fishing vessel, Limited Waters STCW-F Reg. II/4 and I/8.1
Fishing Master, Fourth Class (CFV 4) issued from March 21, 1980 and before July 1, 2007 Or Fishing Master, Fourth Class (FM4) issued as from July 1, 2007 and before XXXX XX, XXXX	*Ship construction and stability, level 1 (SCS 1) *SEN-Limited	Fishing Master, 24m, Limited Waters	Also valid as Officer of a Fishing vessel of less than 45 m, Limited Waters Master, any type of vessels of less than 60 GT 18m , NC2	Officer, fishing vessels of less than 45 m in length, limited waters STCW-F Reg. II/4 and I/2



Government of Canada / Gouvernement du Canada



DECK WATCH REQUIREMENTS

Minimum requirement for Fishing vessels of 24 m or more

For F/V ≥ 24 meters in registered length:

No change to the current MPR requirements under section 216

In other words, the personnel required for the navigational watch shall consist, as a minimum of:

- The Master
- A certificated officer in addition to the master if the voyage duration requires it
- An additional person

Note:

- Hours of rest have to be complied with
- A certificated officer (who can be the Master) in charge of the watch and an additional person must be “on watch” at all times



Government of Canada / Gouvernement du Canada

Canada 21

DECK WATCH REQUIREMENTS

Minimum requirement for Fishing vessels between 12 m and 24 m

For F/V ≥ 12 m in overall length and < 24 m in registered length:

- A certificated person (Master or Officer) keeps the watch all the time
- or**
- While one of the certificated persons is “off duty” and the other certificated person is on stand-by, a non certificated person may stand the watch if:

- ✓ The master is satisfied that the person standing watch is capable of providing proper look-out

and

- ✓ The Master has provided that person with written instructions (master’s standing orders) on how to keep the watch, which includes in what circumstances the certificated person on stand-by should be called

(A certificated officer is required in addition to the master if the voyage duration requires it)



Government of Canada / Gouvernement du Canada

Canada 22

DECK WATCH REQUIREMENTS

Minimum requirement for Fishing vessels of less than 12 m

For F/V < 12 m in overall length:

- The master keeps the watch all the time
- or**
- While the master is on stand-by, a non certificated person may stand the watch if:
 - ✓ The master is satisfied that the person standing watch is capable of providing proper look-out
- and**
- ✓ The Master has provided that person with written instructions (master's standing orders) on how to keep the watch, which includes in what circumstances he should be called

(Only a certificated master is required on board this size of vessel)



Government
of Canada

Gouvernement
du Canada

Canada²³

THANK YOU

Prepared by:

denis.belanger@tc.gc.ca

For comments or information:

➤ scott.weatherdon@tc.gc.ca

or

➤ mario.lavoie@tc.gc.ca



Government
of Canada

Gouvernement
du Canada

Canada²⁴