

NAVIGATION BETWEEN PERCE AND BONAVENTURE ISLAND

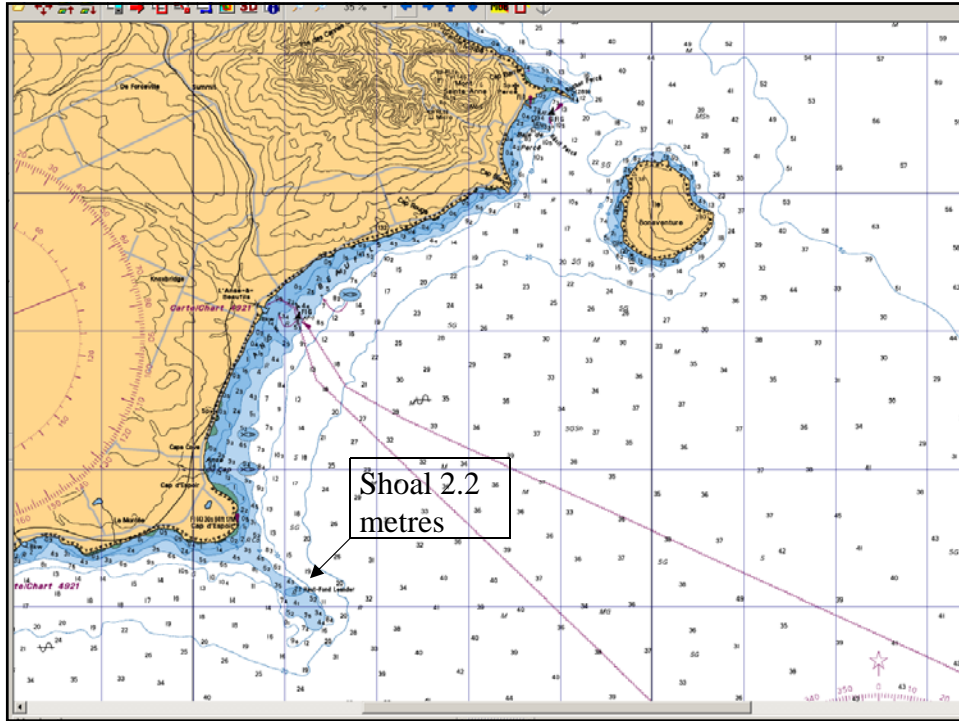
Standing Committee on
Fishing Vessel Safety, 2011



RDIMS No. 6206877

Background

- Some residents and organizations in Percé would like to see limits placed on vessel transits between Bonaventure Island and Percé.
- They point out that:
 - there is an alternative route
 - some transits are unjustified
 - such transits place additional pressure on the environment
 - they also increase the risk of accidents



Solutions

- Implementation of regulations
 - Long, laborious and costly process
- Implementation of a voluntary measure
 - Quick results
 - Flexible
 - Less laborious and less costly
 - Option retained by TC at present