



# Submarine cables

Standing Committee on Fishing Vessel Safety

February 2018



# Notices to Mariners, annual edition

## Submarine cables

Symbols for submarine cables do not differentiate between different types of cables (See Chart no 1).

Changes to existing cables are published through Notices to Mariners (<http://www.notmar.gc.ca/>) in the following cases:

- For new submarine cables – if located in an area accessible to commercial shipping;
- Existing cables – if changes of significance to navigation, if the cable is removed.



CANADIAN COAST GUARD

[www.notmar.gc.ca](http://www.notmar.gc.ca)

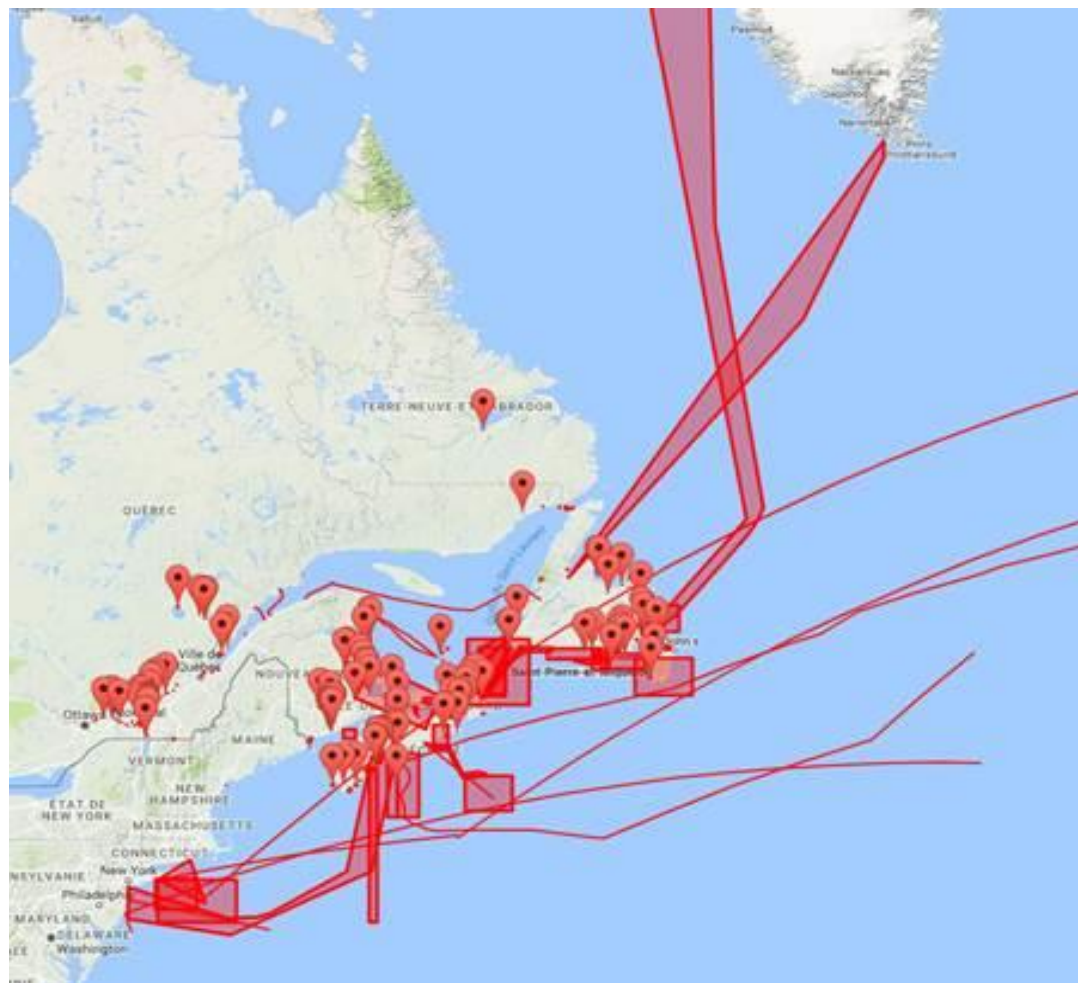
# Submarine cables mapped by the Canadian Hydrographic Service

A total of 340  
telecommunication  
submarine cables  
have been listed.

Non-exhaustive list of nautical  
charts illustrating one or more  
submarine telecommunication  
cables:

- 1233-01 • 1350-A02 • 1430-01 • 1515-A01
- 1236-05 • 1350-B01 • 1432-01 • 1515-B01
- 1311-01 • 1350-C01 • 1433-01 • 1552-B01
- 1312-01 • 1350-D01 • 1509-A01 • 1553-A01
- 1313-01 • 1350-D02 • 1510-B01 • 4001-01
- 1313-02 • 1351-A01 • 1512-A01 • 4416-03
- 1316-01 • 1351-B01 • 1514-A01 • 4950-02
- 1320-01 • 1351-B02 • 1514-B01

# Mapped cables, Quebec and Atlantic region







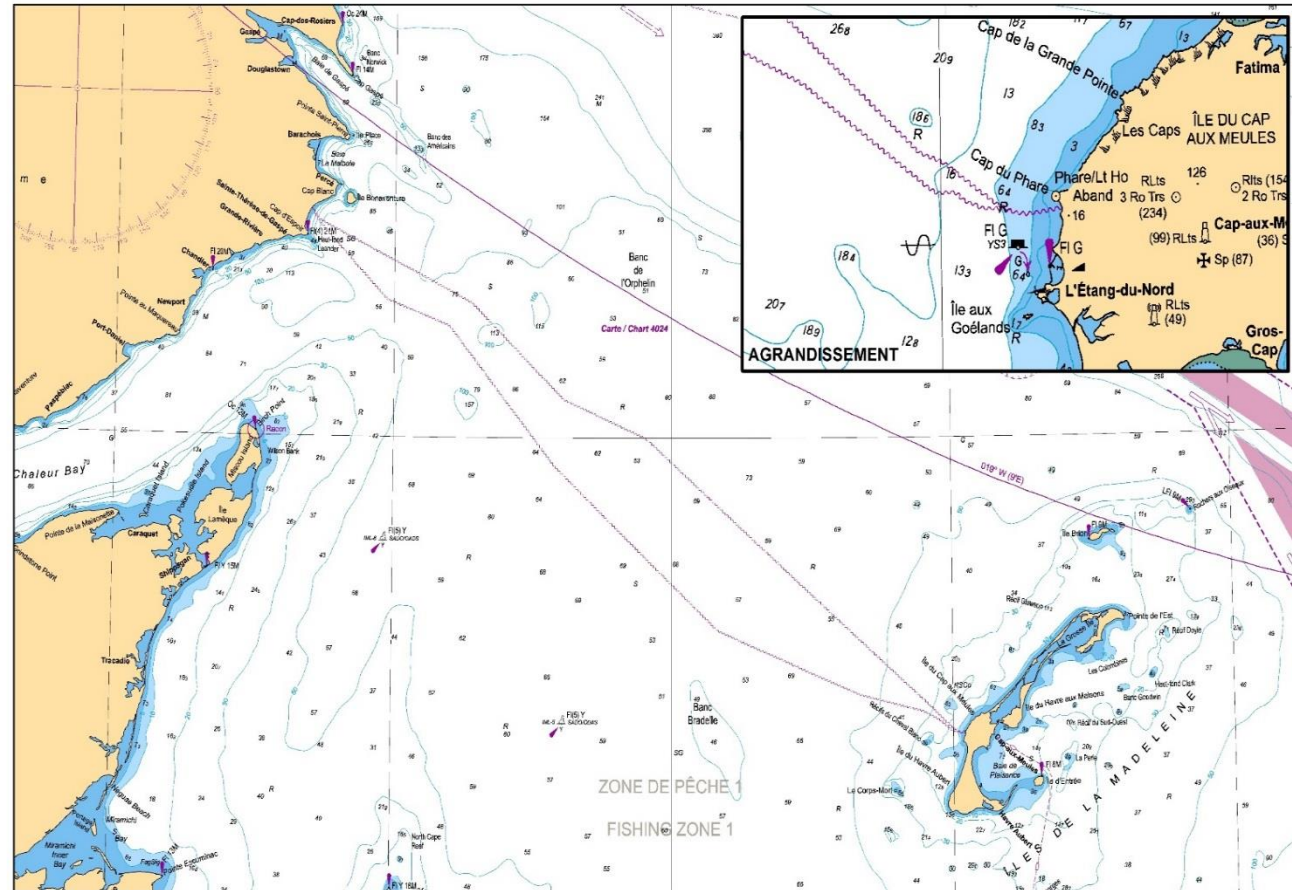
# Example of submarine cable

Submarine cable crossing the Gulf of St. Lawrence from l'Étang-du-Nord (MI) to Percé.

## Legends:

Extract from Chart no 1

Submarine cable



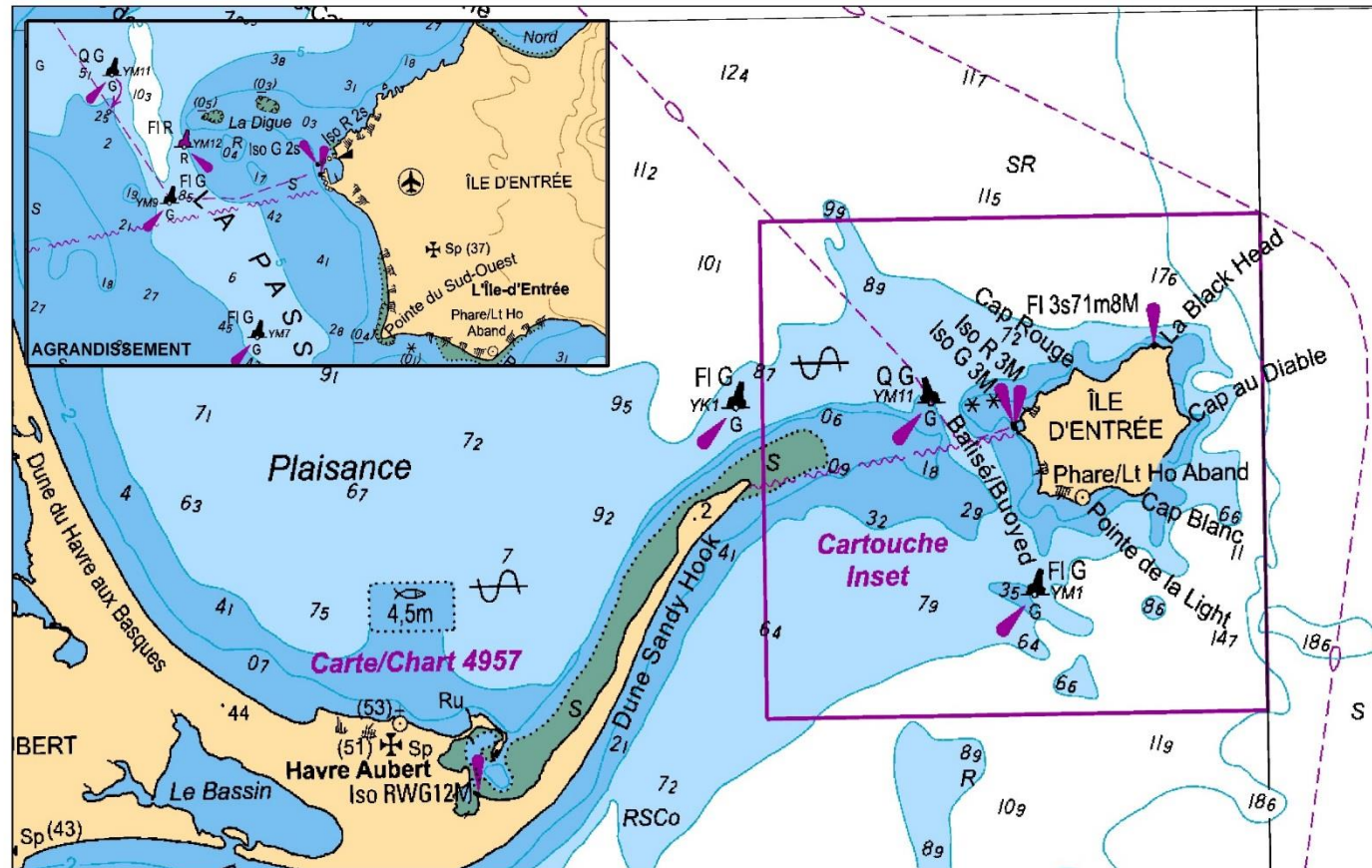
# Example of abandoned submarine cable

Abandoned  
submarine cable  
from Sandy Hook  
(MI) to L'Île  
d'Entrée (MI)

### Legends:

Extract from Chart no 1

# Abandoned submarine cable





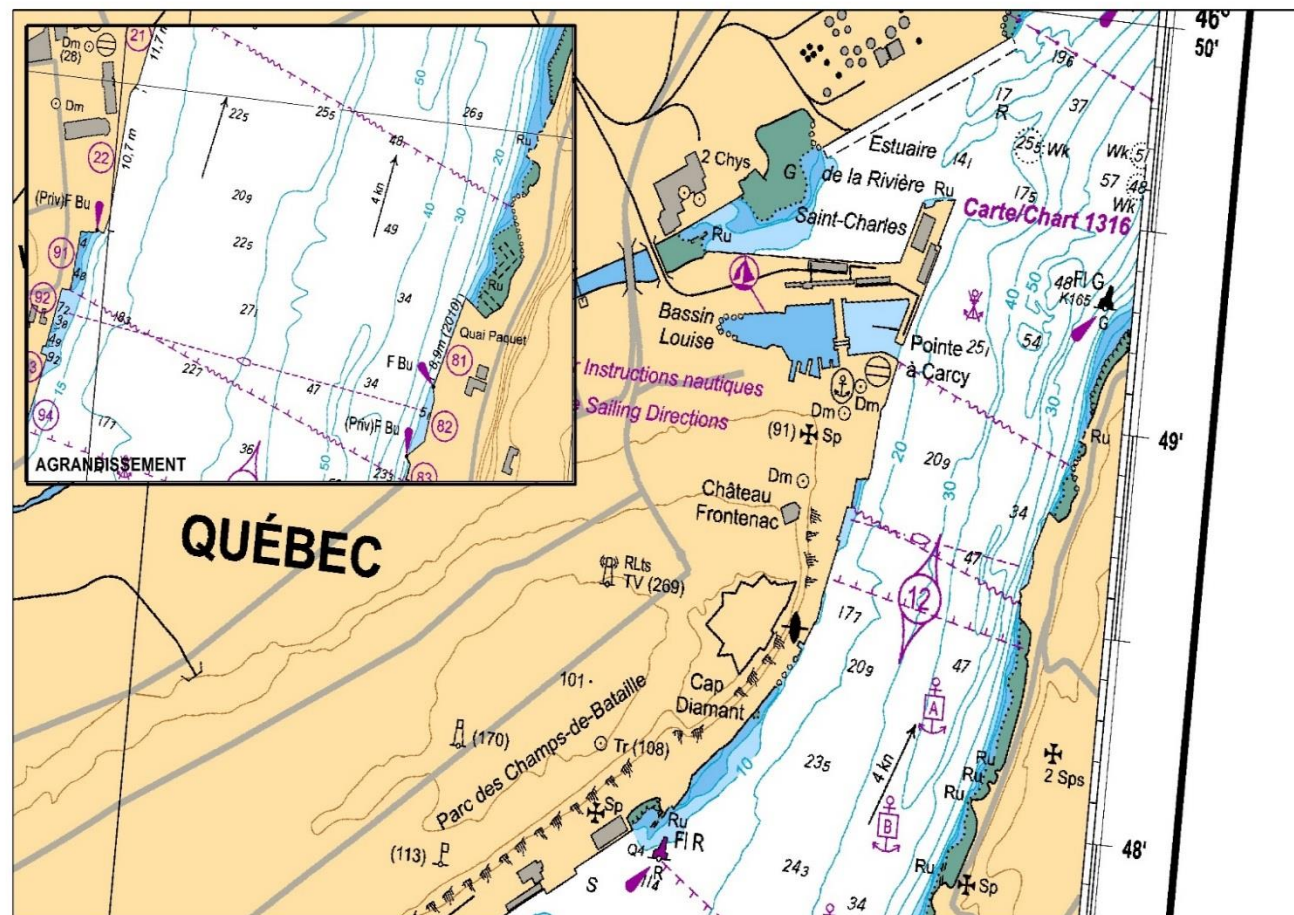
# Example of submarine cable area

Submarine cable area  
crossing the St-  
Lawrence river  
between Quebec and  
Levis

## Legends:

Extract from Chart no 1

Submarine cable area





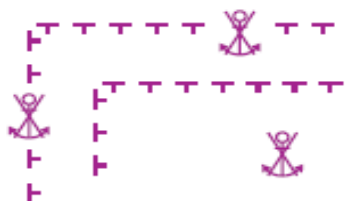
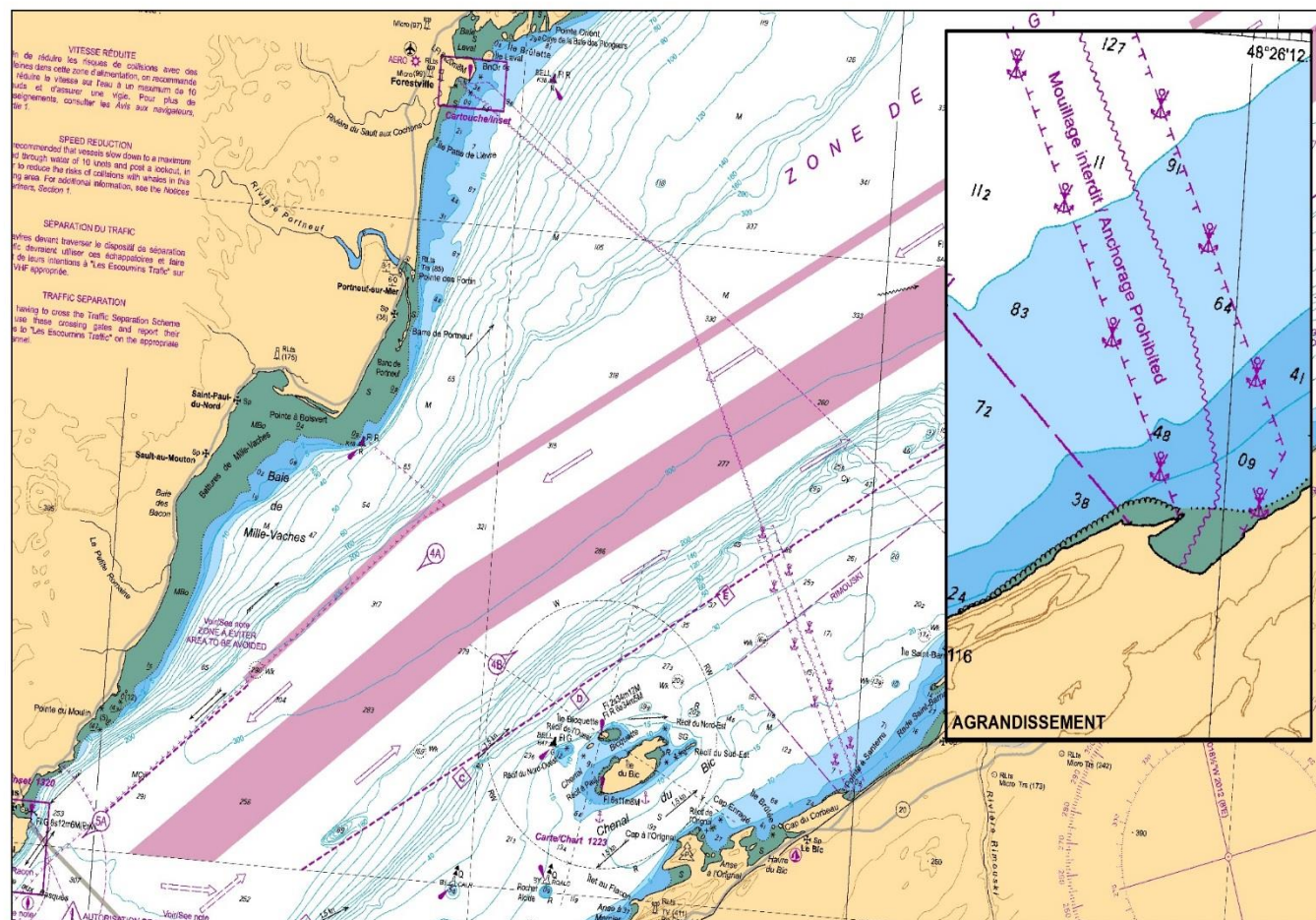
# Anchoring prohibited area (Sunoque II)

Anchoring prohibited area, South section of submarine cable Sunoque II, from Pointe à Santerre (LSL) to Forestville.

## Legends:

Extract from Chart no 1

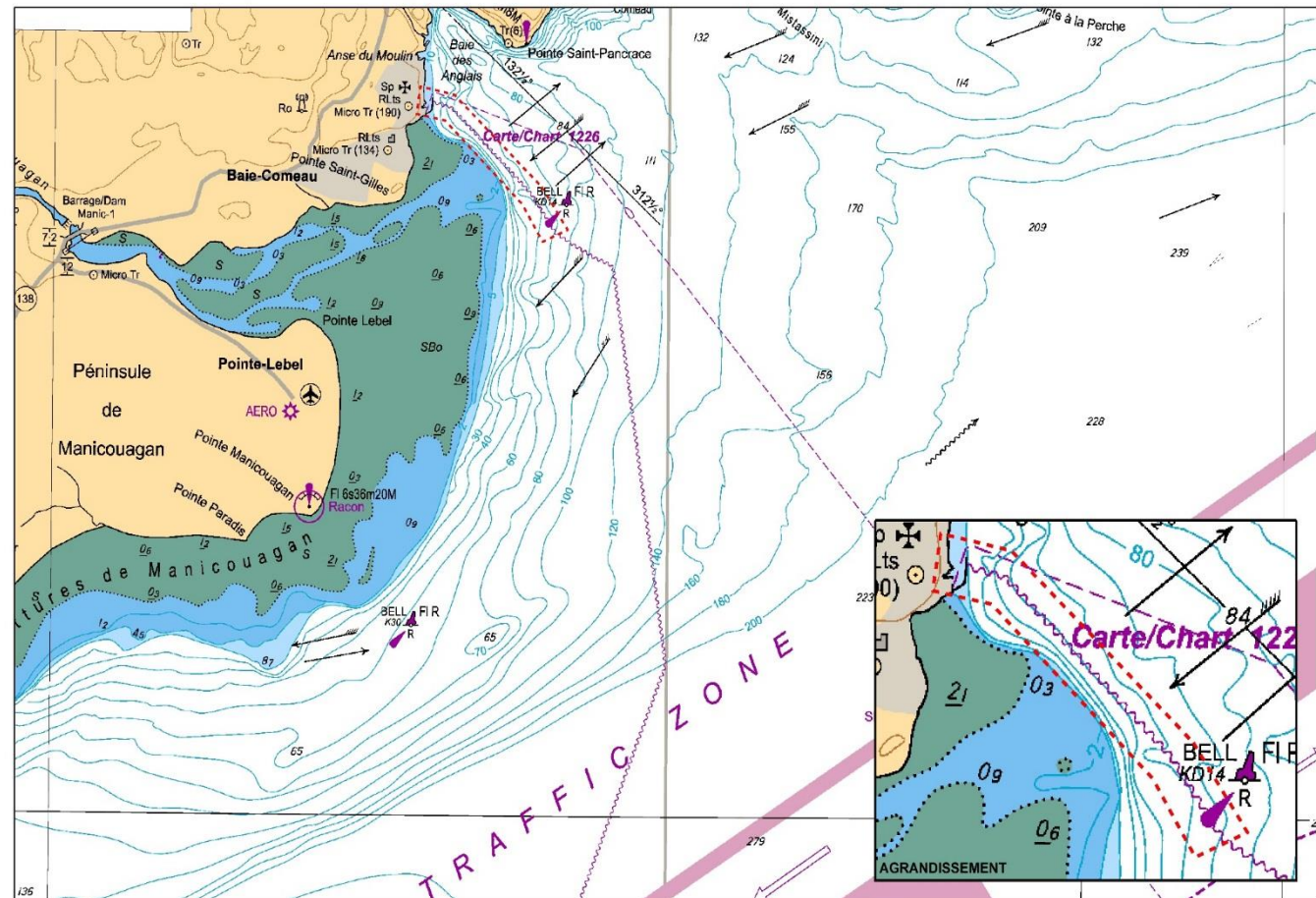
Anchoring prohibited





# Requested prohibited anchorage area (Sunoque I)

Prohibited anchorage area proposed to be assigned to the North section of the submarine cable Sunoque I. From Pointe-au-Père (BSL) to Baie-Comeau (Côte-Nord)

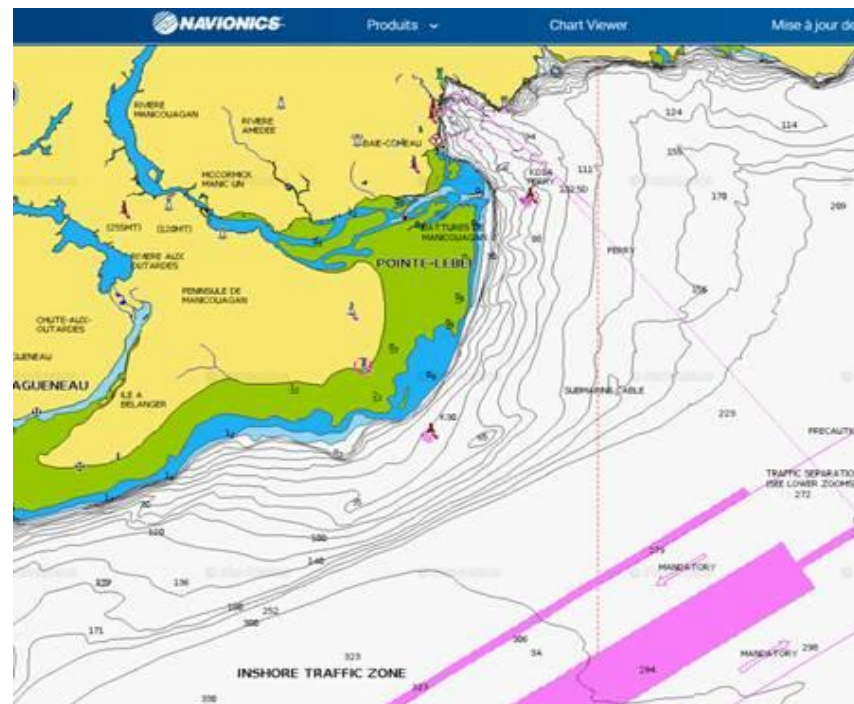


# Official electronic charts vs manufacturers

## Papier



## Navionics





# Charts and Nautical Publications Regulations, 1995

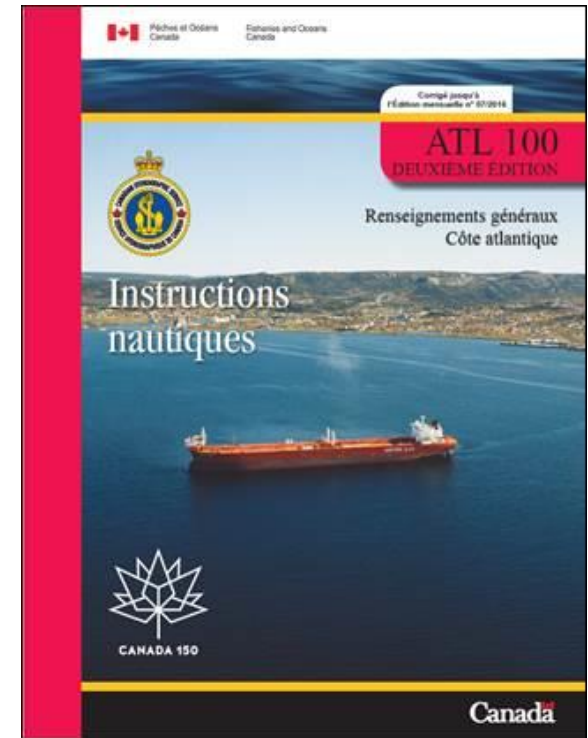
The master and owner of a ship of less than 100 tons are not required to have on board the charts, documents and publications referred to in subsection (1) if the person in charge of navigation has **sufficient** knowledge of the area where the ship is to be navigated.



# Sailing Directions

## Summary of the *International Convention for the Protection of Submarine Cables (ICPC)*.

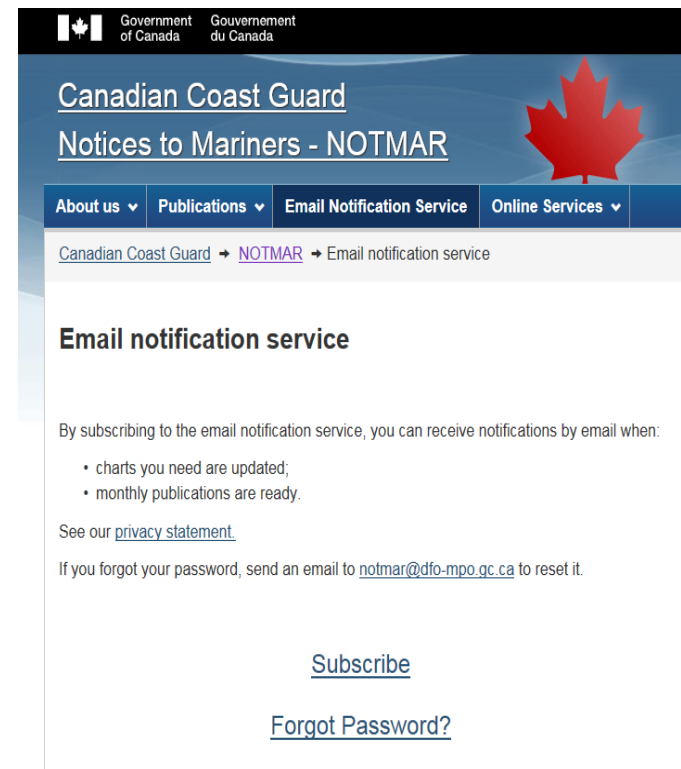
The breaking of a submarine cable, which could interrupt or hinder communications, **is punishable, without prejudice to the civil action, in damages.**



# Notices to Mariners

- The regulation stipulates the obligation to update nautical charts;
- Free subscription service;
- For electronic CHS charts, they must be registered to receive updates.

[www.charts.gc.ca](http://www.charts.gc.ca)



[www.notmar.gc.ca](http://www.notmar.gc.ca)

# Notices to Mariners, annual edition

## Submarine cables

**WARNING** - Mariners should exercise every caution to **avoid anchoring or trawling in cable areas**, even though there may be no specific prohibition against doing so. Danger to mariners and serious interference with communications or power supplies may result from damage to submarine cables. Equal care should be taken wherever the symbol for a submarine cable is shown on any chart.



Sécurité First, Service Marins

**CANADIAN COAST GUARD**

[www.notmar.gc.ca](http://www.notmar.gc.ca)





# Notices to Mariners, annual edition

In the event of any vessel fouling a submarine cable, every effort should be made to clear the anchor or gear by normal methods. If these efforts fail, the anchor or gear should be slipped and abandoned without attempting to cut the cable. **High voltage are fed into some submarine cables and serious risk of loss of life or severe burns exists.**

Vessels responsible for breaking or damaging a submarine cable **could face legal proceedings and could be held liable for the costs and expenses.**



# **Your opinion is important!**

Do you think fishermen should be consulted  
when there is a project to install a new  
submarine cable?

☐ **YES**

☐ **NO**

# **Your opinion is important!**

How do you think fishermen should be consulted when there is a project to install new submarine cable?

- ☐ **Meeting of the SCQFVS**
- ☐ **Fishermen's association**
- ☐ **Meeting with Fisheries and Oceans Canada**
- ☐ **Mailing from BAPAP**



# Thanks!

**Annie Larouche**

Sécurité et sûreté maritimes  
Centre de Transports Canada  
Est-du-Québec  
[annie.larouche@tc.gc.ca](mailto:annie.larouche@tc.gc.ca)

et

**Robert Dorais**

Service hydrographique du Canada  
Région du Québec  
Pêches et Océans Canada  
[Robert.dorais@dfo-mpo.gc.ca](mailto:Robert.dorais@dfo-mpo.gc.ca)